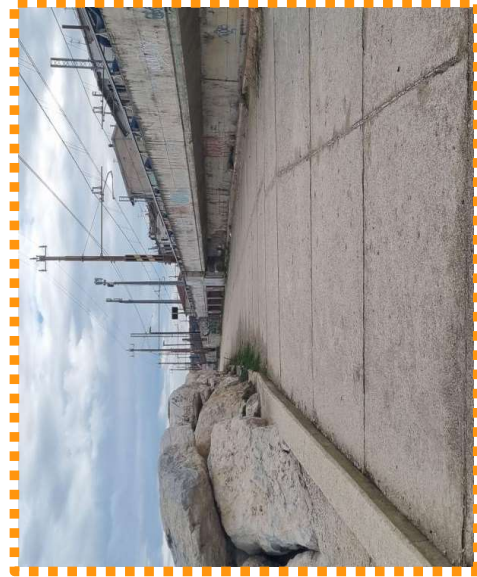
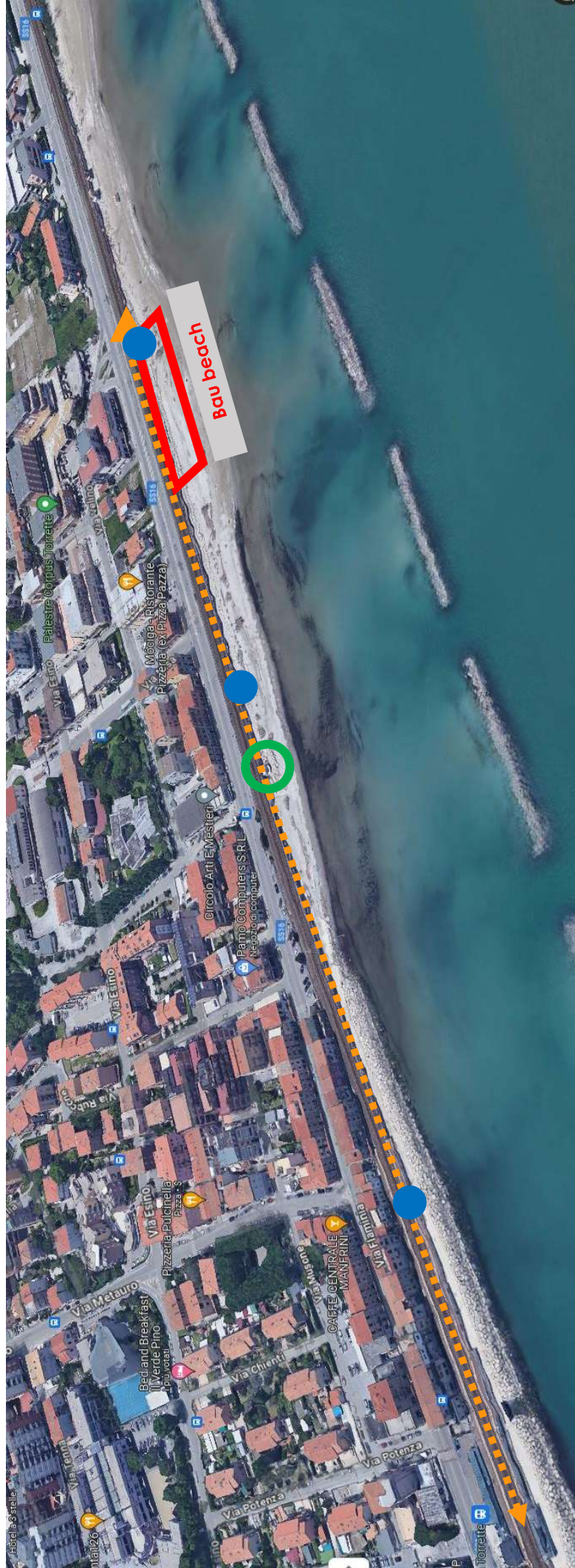


# Dotazioni esistenti



Percorso



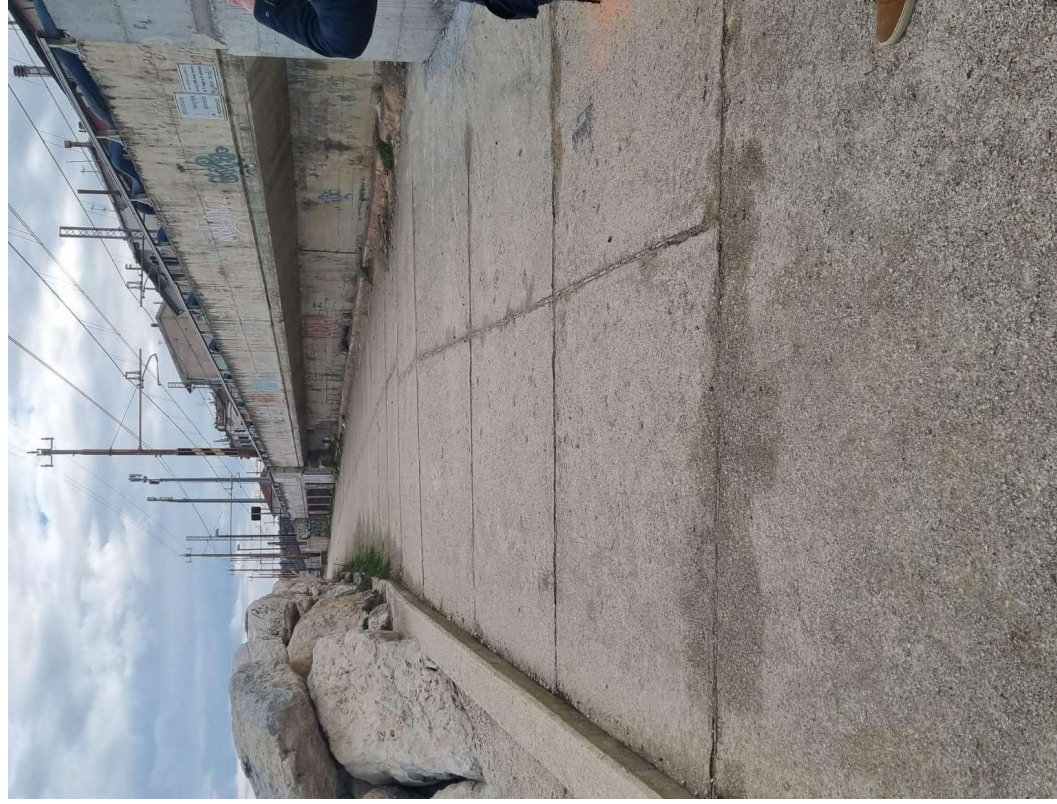
Servizi igienici



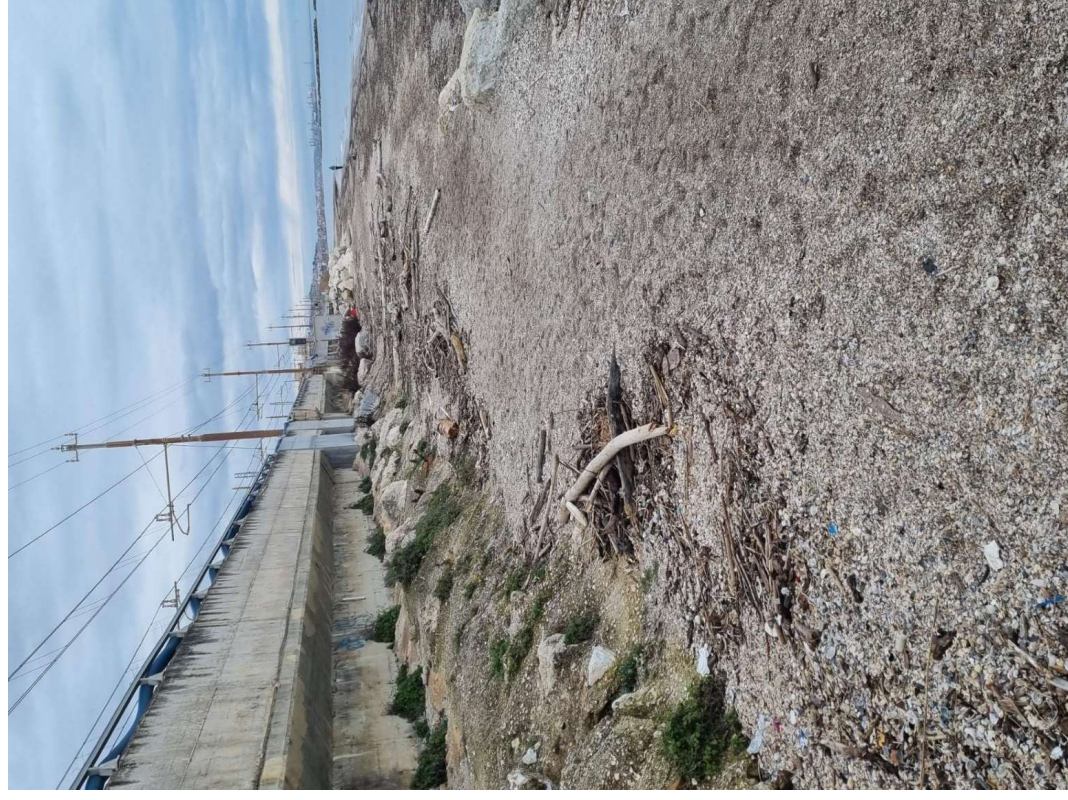
Docce pubbliche



## Percorso esistente

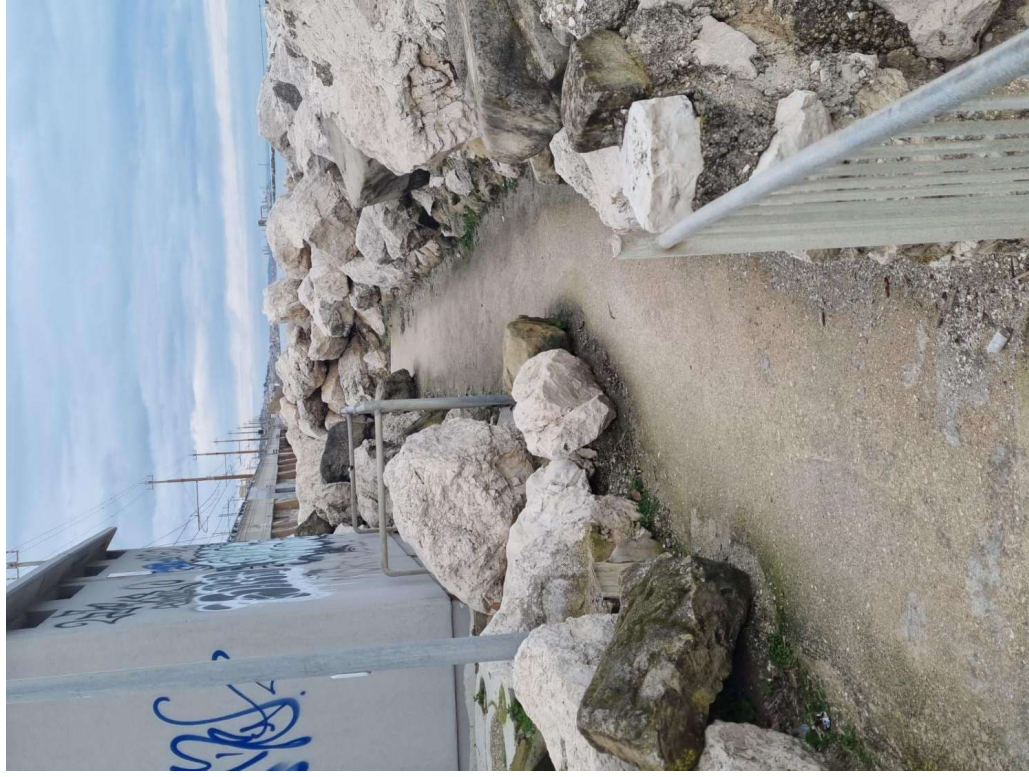


Innesto percorso/stazione  
torrette

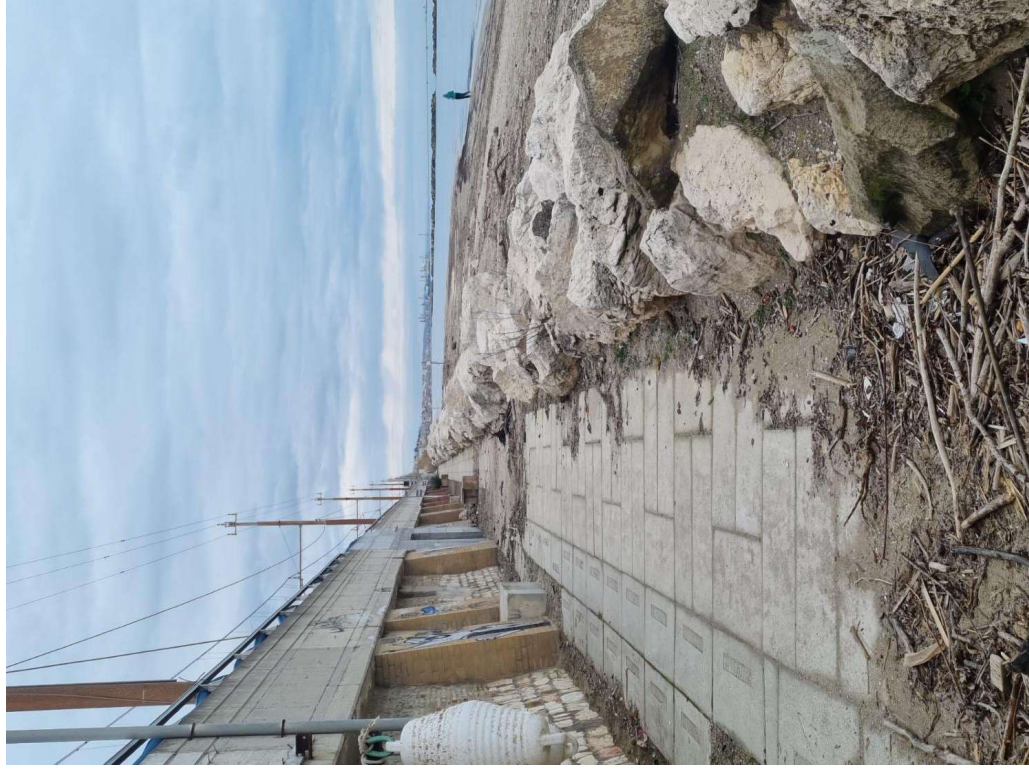


Segmento percorso non pavimentato (fino a  
wc pubblici esistenti)

## Percorso esistente

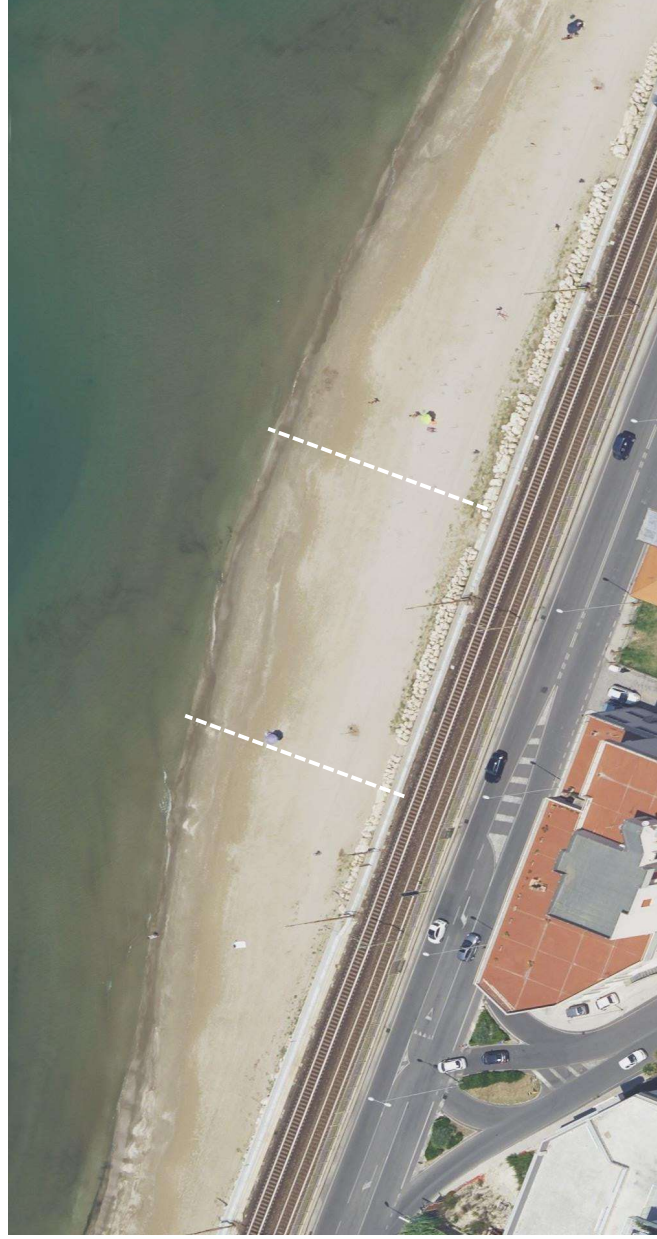


Percorso pavimentato (dopo pubblici esistenti)

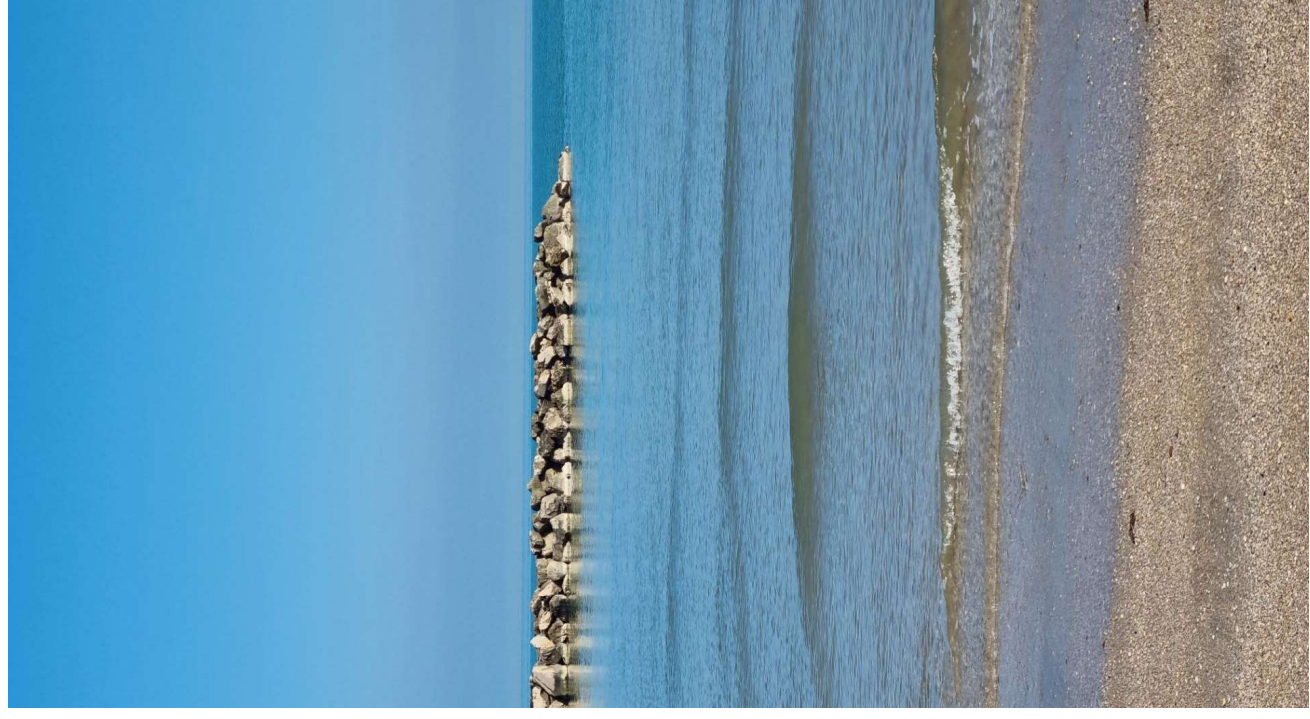
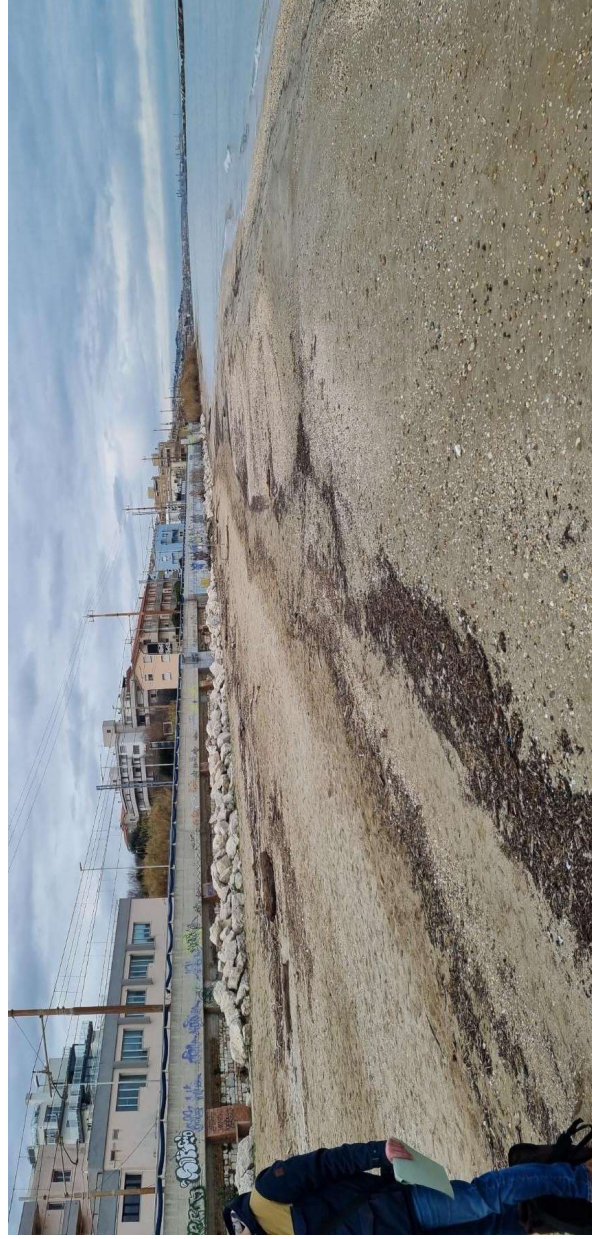


Percorso pavimentato (in prossimità della spiaggia cani)

# Area dog friendly individuata



Tratto litoraneo ritenuto idoneo



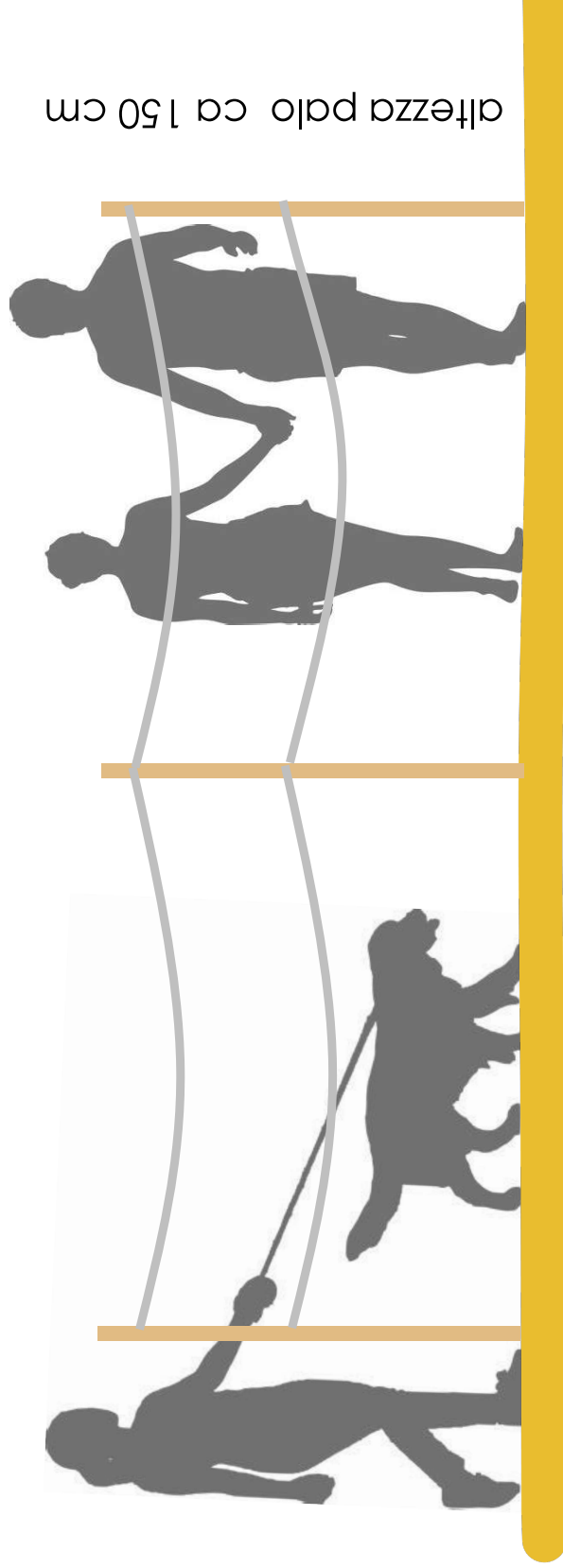
## Area Bau beach – dotazioni/attrezzature



### Delimitazione/recinzione

Palo in legno con corda singola o doppia

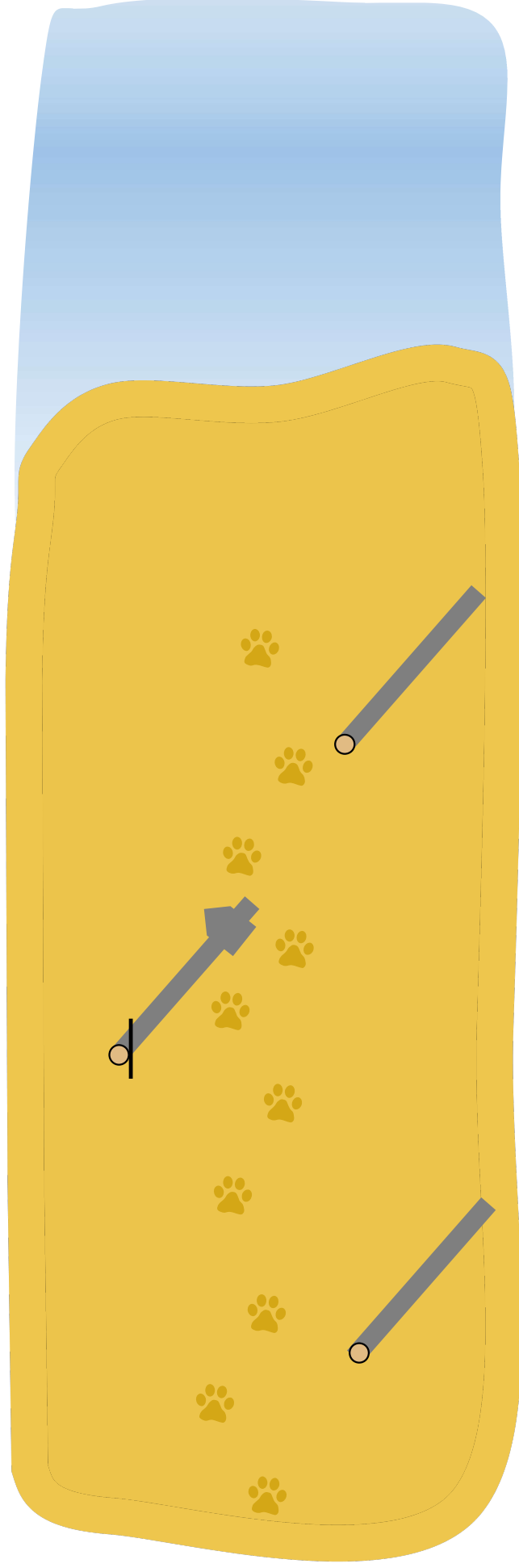
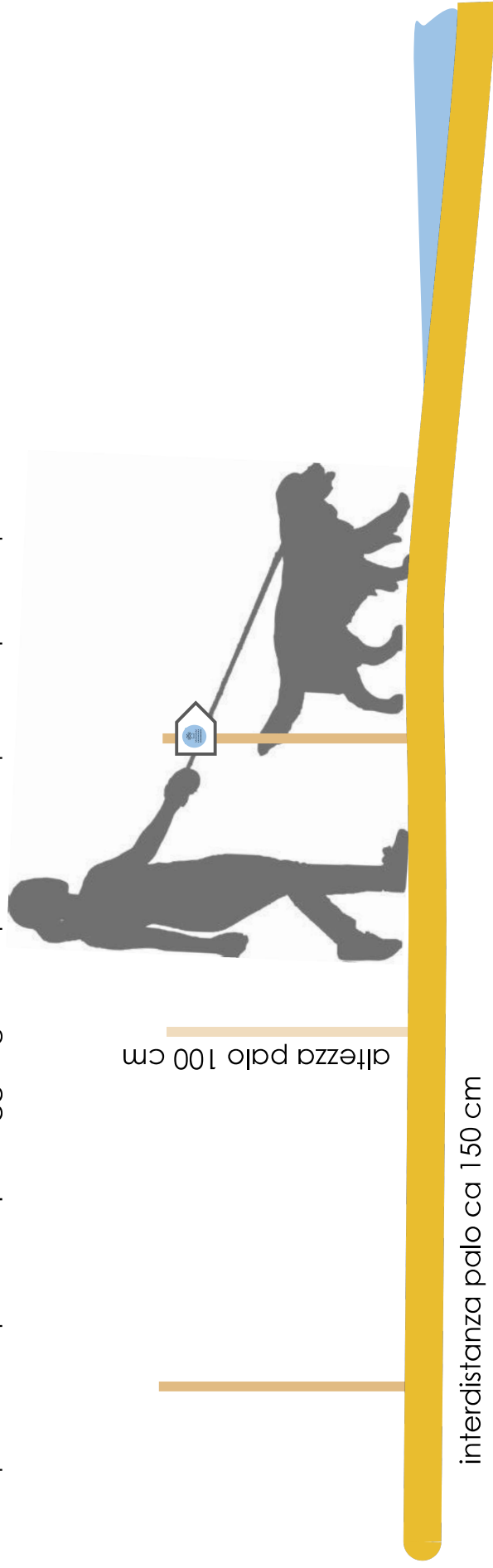
Pali da installare n. 24  
Corderia (doppia ) m 120 circa



## Segnaletica percorso verso mare

Pali da installare 34

Si ipotizza un percorso per raggiungere lo specchio acqueo di tipo non pavimentato





## Delimitazione area balneabile ( circa 140 metri lineari)

